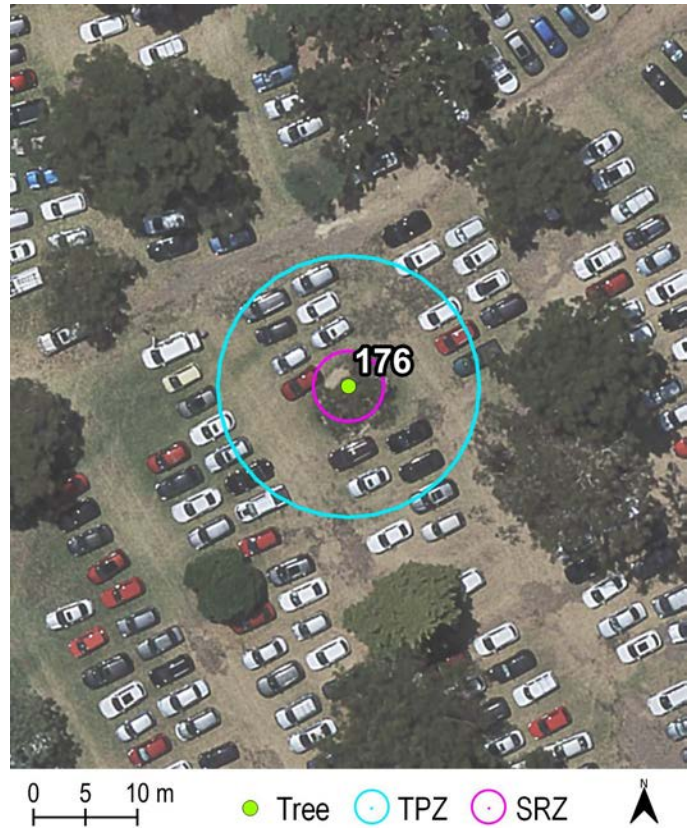


# Exceptional Tree Register Report

<b>Tree Number:</b>	176
<b>Address:</b>	Yarra Park Brunton Avenue EAST MELBOURNE VIC 3002
<b>Location:</b>	In steel picket fenced enclosure, Yarra Park
<b>Record Type:</b>	Single Record
<b>Number of Trees:</b>	1
<b>Group Number:</b>	N/A
<b>Botanical Name:</b>	<i>Eucalyptus camaldulensis</i>
<b>Common Name:</b>	River Red Gum
<b>Origin/ Type:</b>	Melbourne/Evergreen
<b>Diameter at Breast Height (cm):</b>	105
<b>Tree Protection Zone ((m): Radius from centre of trunk)</b>	12.6
<b>Basal diameter (above root flare (cm)):</b>	109
<b>Structural Root Zone (m): (Radius from centre of trunk)</b>	3.4
<b>Height (m):</b>	5
<b>Average canopy width (m):</b>	8
<b>Approximate Age (years):</b>	~300
<b>Easting:</b>	322751.163823
<b>Northing:</b>	5812229.181247

Location



## Statement of Significance:

This tree fulfils the criteria of: Horticultural value; Location or context; Particularly Old; Historical Value; Aboriginal association; Social, cultural or spiritual value.

This tree is a living Scarred tree with Aboriginal significance. The scar on this River Red Gum was created when the Wurundjeri people removed bark to make canoes, shields, food and water containers, string, baby carriers and other items and is likely to be approximately 300 years old.



Greenwood Consulting 2019.  
Updated by Treelogic 2019.

Information contained in this report was obtained solely for the purpose of identifying whether a tree should be placed on the City of Melbourne's Exceptional Tree Register. No representations are made as to the accuracy, currency or completeness of any of this information nor its relevance for any other purpose.

